



# SKYLAND CHRONICLE

## PRESIDENT'S MESSAGE

Greetings Skyland Property Owners:

Well, as I'm sure all of you can deduce, things have been pretty quiet here at Skyland so far in 2020, particularly since March. We've all been hunkering down and trying to live in accordance with the county and state "stay in place" restrictions. A big thank you to our Skyland Metropolitan District staff for keeping our walking paths plowed so we could get out for some much needed exercise. All the ice and snow has melted now, and with the recent warm weather everything is greening up nicely.

Even though all of Crested Butte's summer events that draw large crowds (Alpenglow, July 4<sup>th</sup> Parade, C.B. Arts Festival, etc.) have been cancelled, many of the COVID restrictions are starting to ease here. After May 27<sup>th</sup> Gunnison County will finally be open to all guests and tourists. Many businesses are likely to reopen after June 1<sup>st</sup>, but restaurants will have limited seating due to "distancing" requirements. It sounds like they will be relying on a lot of outdoor seating. There has even been talk by the town council of limiting parking and auto traffic on Elk Ave. which would allow restaurants to extend their outdoor seating closer to the street.

All has been quiet regarding the Brush Creek parcel, since last fall when Gatesco withdrew their development proposal for the property after failing to reach a compromise agreement with all its owners. I've not heard of anything currently in the works there, and now Gatesco is off building an affordable apartment complex for the county in Gunnison near the hospital.

There is not much new to report here at Skyland with the exception of street construction currently extending Skyland Drive. The extension makes a switchback turn to the southeast, then proceeds up the slope of Mt. Crested Butte, running above Lake Grant and below, but parallel to, the

Continued on page 4

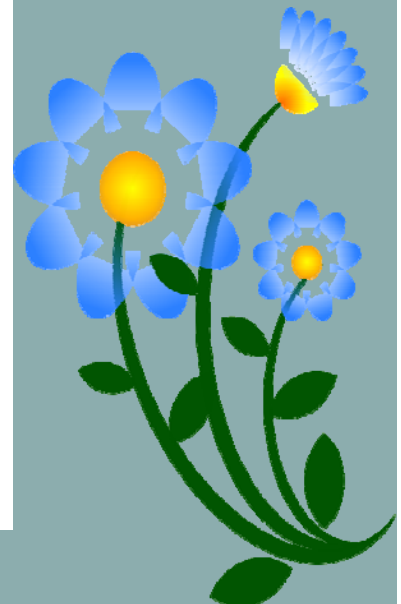


### INSIDE THIS ISSUE

- Manager's Corner ..... 2
- Parking & Boat Permits... 2
- Meeting Schedules ..... 3
- Payment Drop Boxes ..... 3
- Noxious Weed Spraying .. 4
- Lake Grant Pavilion  
Information..... 5
- Direct Pay (ACH) Info ..... 5
- Skyland Real Estate  
Sales..... 5
- Owner Info Sheet ..... 6
- Who's Who at Skyland..... 8

### SPECIAL POINTS OF INTEREST

- The Annual Meeting will be virtual on Sunday, July 5<sup>th</sup> at 4:00pm.
- The Annual picnic has been postponed until current restrictions allow.



## PARKING AND BOAT PERMITS

In an effort to curb illegal parking and access to Skyland property owner amenities, the Skyland Community Association (SCA) has continued to maintain a vehicle permit and boat sticker program. We know that these permits and stickers have helped the staff enforce parking and use of owner amenities.

The Association recently updated the parking stickers to placards that hang from your rear view mirror. These placards can be used in any of your vehicles. The old stickers are still good for as long as you have your vehicle or until you have to replace the windshield.

**Please Note:** Only two (2) parking placards will be issued to each household. Temporary parking passes are available at the Association office for your guests and long-term renters.



## MANAGER'S CORNER

By Mike Billingsley

This year has presented challenges with restrictions and distancing but staff has continued working hard to have the neighborhood ready for another beautiful summer. The State and County are constantly adapting and easing the guidelines for what is looking to be a semi-normal summer. Several large gatherings and events have been cancelled or postponed including: the Community Association Picnic, 4<sup>th</sup> of July Parade, Alpenglow, and the Arts Festival. The Gunnison County website ([www.gunnisoncounty.org](http://www.gunnisoncounty.org)) has daily updates on COVID-19 and is a great resource for information.

### Third Filing, Phase II

Development of the last phase of Skyland's Third Filing is currently underway. The plat for the last phase was approved in 2004. Development company PCCP has acquired the property and is underway with the project, scheduled for completion in October. The project consists of extending Skyland Drive to the northeast side of Lake Grant and installing all infrastructure to accommodate twelve (12) new Skyland Lots, Lots S-184 through S-195. During construction, access to the Upper Loop from Lake Grant will be closed. The Upper Loop access will be rerouted in the future and available next year. In the meantime, please access the Upper Loop from Skyland using the Divine Trail at the end of Country Club Drive.

### Water Projects

The Skyland Metropolitan District will be performing several projects for the water system this summer. The projects include a back-up generator for the pumps that supply the water tanks and another backup generator to support the pumps that pressurize the upper water distribution system. An additional project on the upper water distribution system will include a new water distribution pipe to connect the dead-end lines on Ridge Road and Forest Lane creating a loop to help with domestic water supply and improve flow to the fire hydrants.

### Lake Grant

The Boat Lay Down area is a very popular place and is becoming overcrowded with boats being stored there. Please check on your craft and if it is damaged, please remove it. Staff will be removing damaged and abandoned boats this summer and is considering alternatives to winter storage at the Lake.

Continued on page 4

## MEETING SCHEDULES

### Community Association Meetings

The Skyland Community Association Board meets about four (4) to six (6) times per year. The meetings are held at the Skyland Lodge, Suite 112A.

### District Meetings

The Skyland Metropolitan and East River Regional Sanitation Districts normally meet the third Wednesday of each month. The start time is 4:00pm and the meetings are also held at the Skyland Lodge, Suite 112A.

### Design Review Meetings

The Skyland Design Review Committee meets one (1) time per month, however, the date changes monthly. Contact the management office at (970) 349-7411 for meeting dates and times. The Design Review also meets in the Skyland Lodge, Suite 112A.

## PAYMENT DROP BOXES

To help save you time and the cost of a stamp, there is a payment drop box located inside of the postal depot on Brush Creek Road. The box is on the wall to your right as you walk in to the building. We accept payments for the Skyland Community Association, Skyland Metropolitan District and the East River Regional Sanitation District all in the one box. So, the next time you are getting your mail at the postal depot, simply drop your payment in the box and take advantage of this small convenience. There is also a drop box located right outside of the office for any time that the office is closed.

## SUMMER ACTIVITIES 2020

For a current list of events or activities for the summer:

- [www.skicb.com/events](http://www.skicb.com/events) Crested Butte Mountain Resort
- [www.cbchamber.com/events/](http://www.cbchamber.com/events/) Crested Butte Chamber of Commerce
- [www.visitcrestedbutte.com](http://www.visitcrestedbutte.com) Visit Crested Butte
- [www.gunnisoncrestedbutte.com/events](http://www.gunnisoncrestedbutte.com/events) Gunnison-Crested Butte Community Calendar

## WATERING TIMES

Watering times are  
**5:00am to 10:00am**  
and  
**5:00pm to 10:00pm**  
on your designated odd numbered day or even numbered day based on your street address.



## TRASH COLLECTION

With the start of summer many animals begin to appear, especially bears. Please **use only bear proof containers** when putting your trash out. Also remember to set your trash out **after 7:00am** on your scheduled day of collection.

**SPRAYING FOR NOXIOUS WEEDS**

The Skyland Metropolitan District continues to spray for noxious weeds every summer. Our weed spraying program has been in effect for several years and has been very successful. Unfortunately, the weeds continue to grow and we continue to spray common and open space areas as needed.

Once again, we are offering to “spot spray” the noxious weeds (dandelions, chamomile daises, yellow toadflax) on your property. Please contact the office at (970) 349-7411 to get on the spraying schedule. The cost of spraying is currently \$25.00 per hour plus the cost of the herbicide.



**MANAGER’S CORNER, cont.**

Continued from page 2

**Trees**

The Skyland Community Association will continue its tree planting program. This year, trees will be placed along the Bike Path and near the Post Office Depot.

**Around the Neighborhood**

Please be responsible pet owners and keep your dogs under voice or leash control at all times. Dogs are not allowed to wander. When out walking your dogs, please be a good neighbor and always pick up after them. There are several pet waste stations placed along the bike path throughout Skyland to help you.

As always, we will likely see bears in our neighborhood this summer. Help keep bears wild and be responsible about trash and bird feeders.



**PRESIDENT’S MESSAGE, cont.**

Continued from page 1

Upper Loop Trail. There are about a dozen new lots opening for development that will be accessed by this new street. You can get a better idea of what’s going on by accessing the “Community Map” tab in the left menu on the [www.skylandonline.com](http://www.skylandonline.com) website.

Due to the group meeting size limitations imposed by current county regulations our annual meeting and picnic won’t come off as originally planned. The meeting will be an online affair this year, and our current thought is to postpone the picnic until later in the summer if the county eases up their restrictions and we feel safe in hosting a large group gathering. Nola will be communicating with you on all the details.

Best regards and safe travels,

Hal Cook

Community Association President

## LAKE GRANT PAVILION

The Lake Grant Pavilion is an absolutely wonderful place in the summer for an impromptu picnic or a planned family get-together. The pavilion is available for use by any Association member.

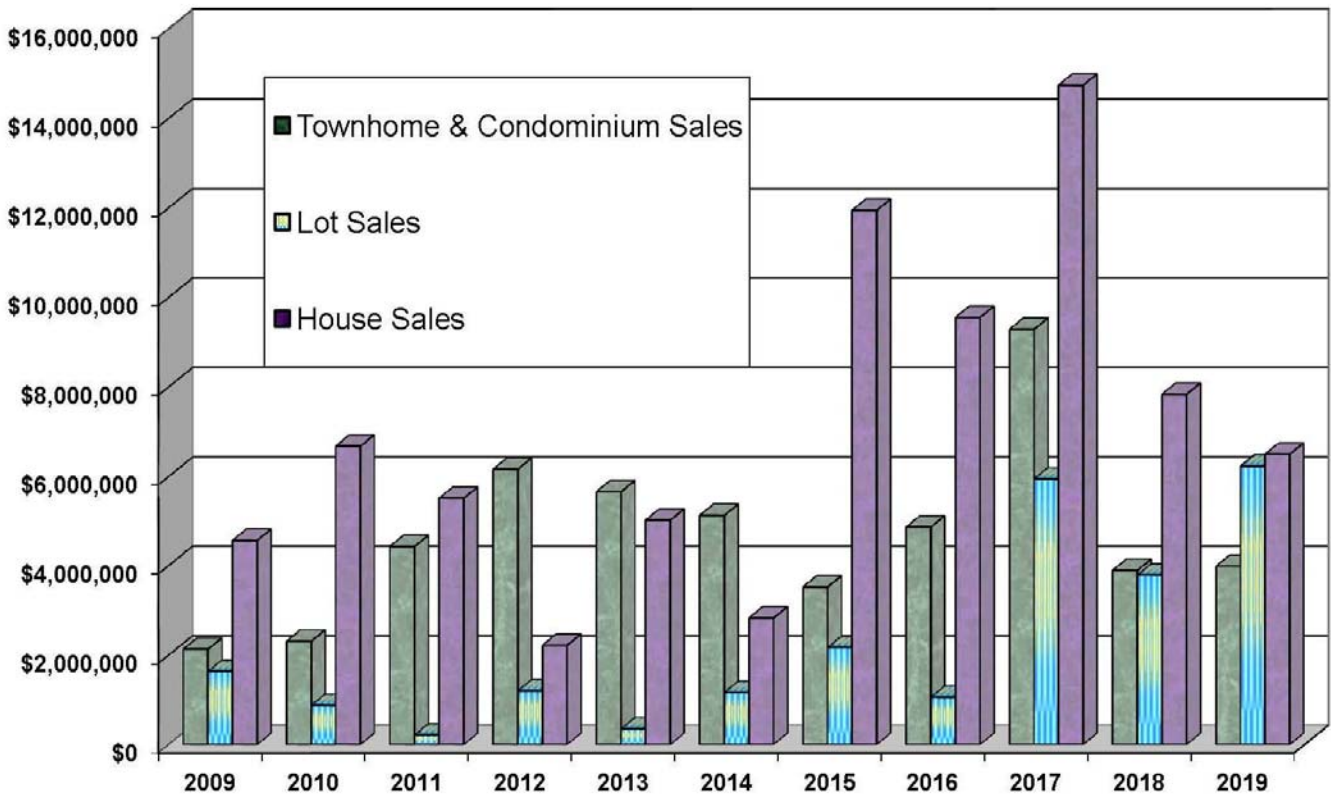
Availability may be checked at any time by simply going to the Skyland Community Association website at [www.skylandonline.com](http://www.skylandonline.com) and clicking on "Community Calendar" or by calling the office at (970) 349-7411. If you wish to reserve the pavilion, the Pavilion Use Permit Form can be found on the website under Forms & Documents in the Skyland Community Association section. We are also more than happy to fax, email or mail the form at your request.

Please keep in mind that in order to reserve the pavilion your Skyland Community Association account must be in good standing and a clean-up deposit of \$250.00 is required in the form of cash or check. The money will be deposited at the time the reservation is made and will be completely refunded after a cleanup inspection. We ask that you take all trash with you so as not to encourage bears or other animals. Please be respectful of the surrounding homes and plan to end your gathering no later than 1/2 hour after dark. A complete copy of the Lake Grant Pavilion Exclusive Use Policy is included with the Permit Form

### DIRECT PAY (ACH)

The Skyland Metropolitan District and East River Regional Sanitation District both offer the Direct Pay or ACH program. Once you are signed up, your water and sewer charges will automatically be deducted from your bank account on the due date (the last day of each month for water and the last day of the first month of each quarter for sewer). You can find the Direct Pay Authorization forms for both Skyland and East River on the Skyland website at [www.skylandonline.com](http://www.skylandonline.com). Please contact Nola if you have any questions about signing up for direct pay.

## SKYLAND REAL ESTATE SALES 2009-2019



These figures have been compiled by Coldwell Banker Mountain Properties. Information contained herein deemed reliable but not guaranteed.

# Skyland Community Association

350 Country Club Dr., Suite 112A

Crested Butte, CO 81224

Phone: (970) 349-7411

Fax: (970) 349-5054

We realize that owner information changes often and we like to keep the information we have on file for each owner as up to date as possible. This information is important to us so we can manage the association more efficiently and contact you if the need arises.

**Lot/Unit Number  
or Address:**

\_\_\_\_\_

**Name and  
Mailing Address:**

\_\_\_\_\_

\_\_\_\_\_

\_\_\_\_\_

**Crested Butte Information:**

Home Phone:

\_\_\_\_\_

Work Phone:

\_\_\_\_\_

Fax:

\_\_\_\_\_

E-mail Address:

\_\_\_\_\_

**Out of Town Information:**

Home Phone:

\_\_\_\_\_

Work Phone:

\_\_\_\_\_

Fax:

\_\_\_\_\_

E-mail Address:

\_\_\_\_\_

**Skyland Property Management Information:**

Company/Individual Name:

\_\_\_\_\_

Address:

\_\_\_\_\_

\_\_\_\_\_

Contact Name:

\_\_\_\_\_

Contact Phone:

\_\_\_\_\_

Thank you for your assistance in this matter.

Sincerely,

Skyland Community Association Management

**\*\*PLEASE MAIL OR DROP OFF COMPLETED FORM TO THE ADDRESS ABOVE.\*\***

# Bearproofing Your Home

Help Keep Bears Wild



Only people can prevent conflicts with bears. Please do your part to protect your home and property, and prevent conflicts with bears.

## Keep Bears Out

- Many bears that enter homes do so through an unlocked or open window or door. Close and lock all bear-accessible windows and doors when you leave the house, and at night before you go to bed.
- If you must leave downstairs windows open, install sturdy grates or bars. Screens don't keep out bears.
- Keep garage doors and windows closed and locked at night and when you're not home. Don't leave your garage door standing open when you're not outside. Install extra-sturdy doors if you have a freezer, refrigerator, pet food, bird seed, or other attractants in your garage.
- Keep car doors and windows closed and locked if you park outside. Make sure there's nothing with an odor in your vehicle, including candy, gum, air fresheners, trash, lotions and lip balms.
- Bears are great climbers — remove any tree limbs that might provide access to upper level decks and windows.
- Replace exterior lever-style door handles with good quality round door knobs that bears can't pull or push open.
- Put on talk radio (not music) when you leave home; the human voice startles most bears.

## Get Rid of Attractants

- Bears follow their super-sensitive noses to anything that smells like food, and can follow scents from up to five miles away.
- Don't leave trash out overnight unless it's in a bear-proof enclosure or container. Obey all local regulations.
- We recommend feeding birds only when bears are hibernating. If you want to feed birds when bears are active, please review the Attracting Birds, Not Bears fact sheet on our Web site.

- Don't store food of any kind in an unlocked garage, flimsy shed or on or under your deck.

- Don't leave anything with an odor outside, near open windows or in your vehicle, even if you're home. That includes scented candles, air fresheners, soaps and lotions.

## Teach Bears They're Not Welcome

- If a bear comes into your yard or close to your home, do yourself and the bear a big favor, and scare it away. A confident attitude plus loud noises like a firm yell, clapping your hands, banging on pots and pans or blowing an air horn sends most bears running.
- If a bear enters your home, open doors and windows and make sure it can leave the same way it got in. Don't approach the bear or block escape routes.
- Never approach a bear. If a bear won't leave, call your local CDOW office. If a bear presents an immediate threat to human safety, call 911.

Visit [www.wildlife.state.co.us/bears](http://www.wildlife.state.co.us/bears) for more information or call your local Division of Wildlife Office.



Please Do  
Your Part  
to Keep  
Bears  
Wild

© JOHN DERVCH

# WHO'S WHO AT SKYLAND

## Skyland Community Association

### Board of Directors

Hal Cook ☼	Kent Fulton
Carol Ann May	Dave McGuire
Steve Polan	
Mike Billingsley, Manager	

☼ President

### Skyland Community Association

350 Country Club Dr., Ste. 112A  
Crested Butte, CO 81224

Phone: 970-349-7411  
Fax: 970-349-5054



### Design Review Committee

Karen Allen ☒	Sam Lumb
Roger Cesario	Dan Murphy
Steve Curtiss	Mike Billingsley, Alternate
☒ Chairperson	

## Skyland Metropolitan District

### East River Regional Sanitation District

Greg Wiggins ☼	Mike Billingsley, Manager <i>mike@skylandco.com</i>
David Bright	Grant Bremer, Assistant Manager <i>grant@skylandco.com</i>
James Calvin	Adam Gerber, Seasonal Maintenance Tech
Jerry Danni	Nola Oberosler, Administration/Accounting <i>nola@skylandco.com</i>
Gordon Moore	
☼ President	

[www.skylandonline.com](http://www.skylandonline.com)